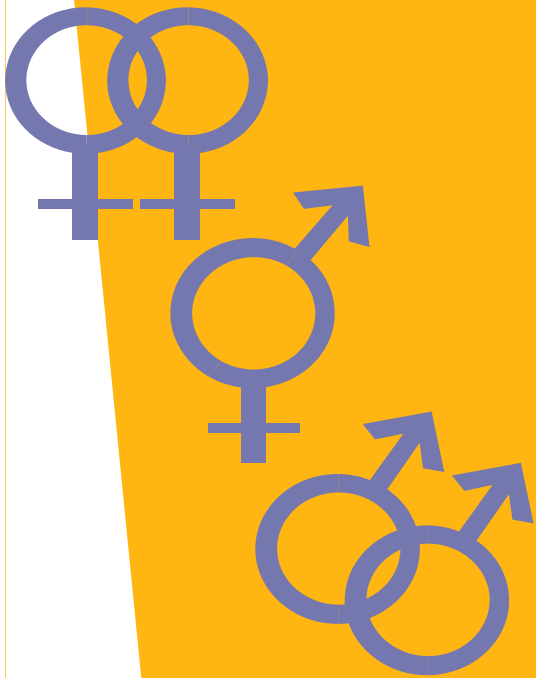


Campus Resources (cont'd)

President's Commission on GLBTIQ Initiatives

This commission, established in 2009 at the request of former KSU President Dr. Daniel Papp, serves to evaluate and make recommendations to the President on issues, concerns, and programs that impact the GLBTIQ community at KSU. Membership on this commission includes staff, faculty, students, and administrators. This commission can be contacted via the Office of Diversity and Inclusion by calling 470-578-2614.



Important Websites:

GLBTIQ Student Programs

glbtqi.kennesaw.edu

Safe Space Initiative

safespace.kennesaw.edu

Office of Diversity & Inclusion

https://web.kennesaw.edu/diversity_inclusion

Dept. of Gender and Women Studies

<http://gwst.hss.kennesaw.edu/index.php>



Multicultural Student Affairs

GLBTIQ Student Programs

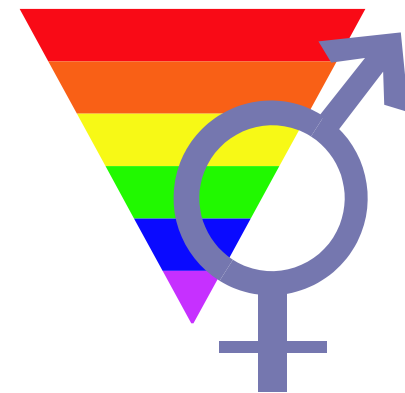
GLBTIQ Student Programs
Multicultural Student Affairs
1000 Chastain Road, #0502
Kennesaw, GA 30144

Phone: 470-578-7926
E-mail: glbtqi@kennesaw.edu
Web: glbtqi.kennesaw.edu



*Kennesaw State University
2016-2017*

On Campus GLBTIQ Resources Guide



Tel: 470-578-7926



GLBTIQ Student Programs

GLBTIQ Student Programs and Resource Center

Our mission is to provide a safe, supportive, and inclusive space where students of all gender identities, gender expressions, and sexual orientations can come to receive support, resources, and referrals in order to aid in the realization of their fullest potential as students, individuals, leaders, community members, and advocates. This office is open to all students, faculty, and staff. We strive to provide the campus community with valuable resources of interest to persons who identify along the spectrum of GLBTIQ and Ally identities and will provide you with a way to connect to the community.

We are located on the first floor of the Student Center in room 164 for the Kennesaw Campus. Marietta Campus, Student Center A230F.

Student Organizations

KSU provides the opportunity to get involved with many student organizations whose focus is to strive for equity among the many constituencies that comprise the campus community. Some of these organizations are:

Kennesaw Pride Alliance (KPA)

The purpose of this organization is to promote awareness, understanding, and tolerance of gay, lesbian, bisexual, intersex, questioning, and transgender issues through advocacy, social activities, and community service. Kennesaw Pride Alliance seeks to provide a support network for the students of Kennesaw State University as well as educate others to challenge stereotypes associated with GLBTIQ lifestyles.

KPA can be contacted via facebook at facebook.com/kennesawpridealliance/ and on OwlLife

Anti-Assimilationist Non-Normative Students of KSU (A/N*)

Group Description: If you're looking for ways to resist oppression and undo structural discrimination, if you are sick of people making prejudicial assumptions about you and want to do something about it, or if you just need a space where people ask you who you are instead of telling you who you are, WELCOME HOME! Join us in resisting assimilation! Non-Normative Anti-Assimilationist Students of Kennesaw State University is KSU's first and only student organization for the non-normative students of the Kennesaw State University community. This group shall work to provide resources, representation, safety, and community for this population. N/A* also has a cubicle on the 3rd floor of the Student Center

A/N* can be contacted via facebook at facebook.com/nonnormative.antiassimilationist

Campus Resources

Safe Space

Safe Space is a Kennesaw State University campus-wide initiative that offers a visible message of inclusion, acceptance, and support to lesbian, gay, bisexual, and transgender individuals. KSU's goal is to have lesbian, gay, bisexual, and transgender (LGBT) students, faculty, and staff feel comfortable on campus so that they can perform at their highest level.

LGBTIQ Archives Project

Started in 2013, KSU's Museums, Archives, Rare Books (MARB) has partnered with GLBTIQ Student Retention Services and the Atlanta LGBTQ Archives Project to develop a repository for North Georgia GLBTIQ history. With an expanding collection, scholars now have access to primary resources for research on LGBTQ topics relating to North Metro Atlanta area. The archive collection can be accessed, through appointment, by calling 770-423-6289.

LGBT Outreach Counselors

Our partners in Counseling and Psychological services offer direct support to LGBTQ community members on campus and facilitate group support/counseling sessions. For more information, please contact Dr. Gregory Stevens at gsteve17@kennesaw.edu or Dr. Jay at jingram@kennesaw.edu. Alternatively, you can call counseling directly at 470-578-6600.

LGBT Community Police Liaison

In partnership with KSUPD, KSU has two police officers designated as liaison, one for each campus: Officer Meredith Barner-Lane on the Kennesaw Campus and Officer Charles Dickens on the Marietta Campus.